



# Maiea, Tāiki E!

Housing First Auckland



HOUSING FIRST

— AUCKLAND —

We are grateful to the whānau, kaimahi, kaupapa Māori rōpū, and the Collective leadership who gave generously of their time and knowledge to co-create this living strategy. Thanks to Richard Turipa for his special artwork and Matua Fred Astle for his wise guidance and translation work.

*Ngā mihi ki a koutou!*



**HOUSING FIRST**

— AUCKLAND —



# Tauparapara

Kōkiri ki runga  
Kōkiri ki raro  
Kōkiri i te whānau whakapuāwai  
Kia whai mana ai i a rātou katoa  
Whano, whano! Haramai te toki!  
Haumi e! Maiea, Taiki e!

Advance to that which is above  
Advance to that which is below  
Advance for the flourishing of families  
So whānau are empowered in their dignity  
Come, ready, forward together  
Join us! Arise as one! We are there!

# Whakapapa

The Housing First Auckland Collective was formed in 2017 and was built on the strong foundation, advocacy, and mahi of community organisations supporting whānau experiencing homelessness.

Together, we developed Tāiki, a kaupapa Māori approach that signals our unification and commitment to collective action.

## **Kōkiri ki runga, Kōkiri ki raro, Whakamaua kia tina! Tina! Haumi ē, hui ē! Tāiki ē!**

We listen deeply and respond to the call of Te Tiriti o Waitangi to drive social justice and build a future where whānau flourish – whānau whakapuāwai.

**Kawanatanga** - Māori have active oversight of Māori outcomes

**Tino Rangatiratanga** - Māori determine how their aspirations are achieved

**Oritetanga** - Māori empowered to improve and achieve true equity for Māori

# He ara tikanga o Tāiki Cultural concepts that guide us

After launching in Auckland, the Tāiki framework was developed to signify the unification of each unique organisation and the recognition of whānau Māori we support within the collective. Tāiki is a kaupapa Māori framework developed by the Housing First Auckland Collective (HFAC) kaupapa Māori rōpū. The Tāiki framework is symbolized by the kōkiri (spearhead), reflecting a position of strength and a unified approach to ending homelessness in Tāmaki Makaurau.

Tāiki sets out three ara tikanga (cultural concepts). These concepts are part of our whakapapa and are weaved throughout our kaupapa. They shape who we are, they inform our actions, and guide how we provide support to others:

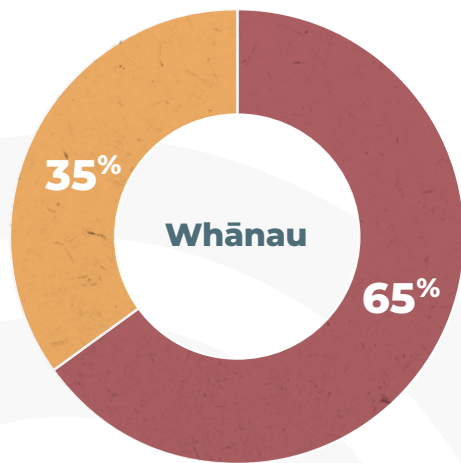
**Rangatiratanga** - supporting people's self-determination. Respecting people's right to make choices. Enabling and empowering people to fulfil their choices.

**Whakawhanaungatanga** - allowing for the opportunity to initiate, connect, foster and build positive connections that sustain ongoing supportive relationships. Sense of belonging.

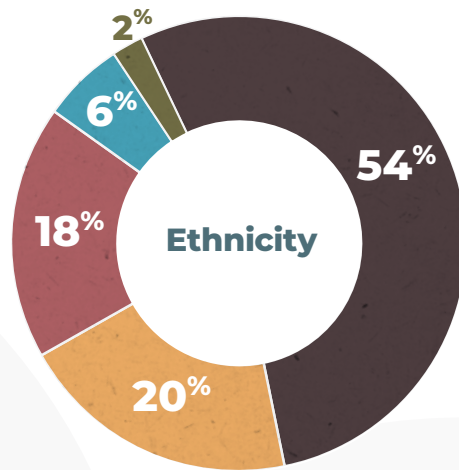
**Manaakitanga** - enhancing someone's mana (inherent self-worth) through honouring and respecting by demonstrative acts of generosity and thoughtfulness. Comprised of two words, mana (inherent self-worth) and aki (encourage and uplift).

# The whānau we support

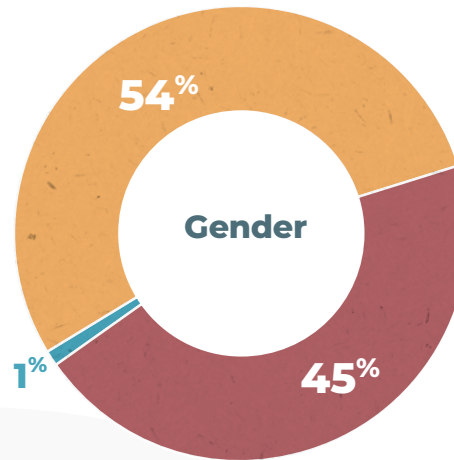
## Whānau permanently housed and / or supported:



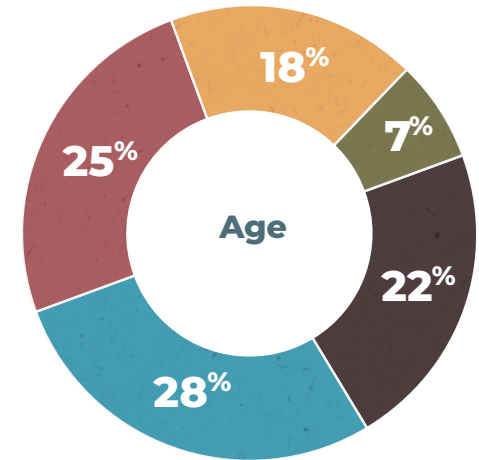
- Single adult
- Family



- Māori
- Pacific peoples
- NZ European
- Other ethnicities
- Asian



- Male
- Female
- Gender diverse



- Under 30
- 30 to 39
- 40 to 49
- 50 to 59
- 60 plus

We are committed to whānau Māori flourishing.

# Maiea, Tāiki E!

Maiea, Tāiki E! marks the continuation of the Tāiki journey, representing a new and exciting stage of our collective journey. Kaimahi, the kaupapa Māori rōpū, and leaders across the Housing First Auckland Collective worked together to develop Maiea, Tāiki E! during 2022 and 2023.

This name symbolises the taking of a second breath and a deeper dive into Housing First in Tāmaki Makaurau. Maiea, Tāiki E! will guide our future work as we build on the solid foundation laid since we began in March 2017.

The background features a dark, textured surface with a prominent white spiral on the right side. Several white geometric shapes, including a triangle, a rectangle, and a curved line, are scattered across the upper portion of the image.

# Tātou kitenga Our vision



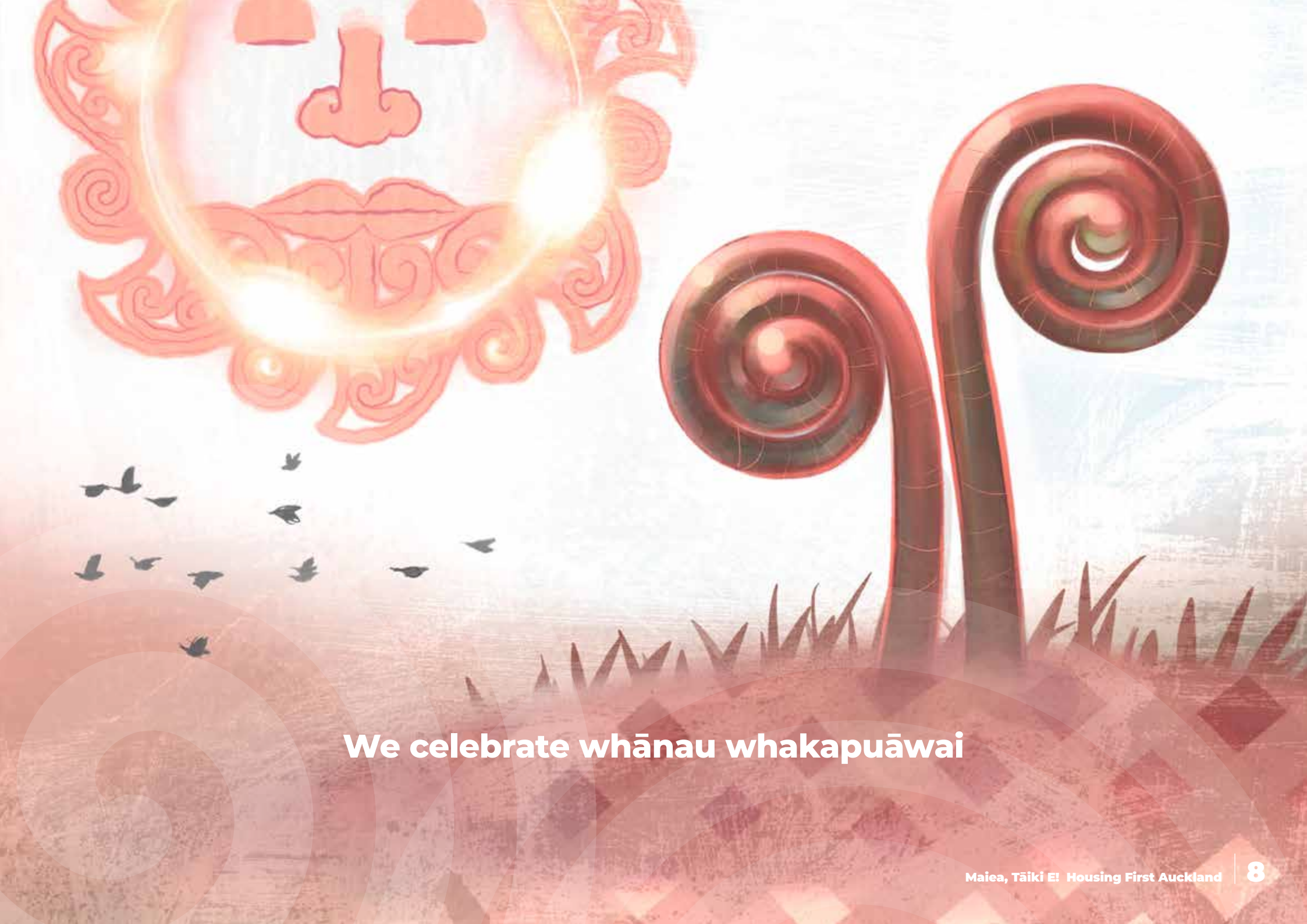


## **Tātou kitenga** **Our vision**

A just and caring Aotearoa where all people have a place to call 'home', to achieve their life aspirations and live their full potential:

**whānau whakapuāwai.**





**We celebrate whānau whakapuāwai**



# **Tātou whakapono Our beliefs**



## **Tātou whakapono Our beliefs**

### **Together, everyone with a place to call 'home' is possible**

Housing is a human right

There is no hauora or rongo without a home

Housing First is an act of justice

A home is a place for belonging and community

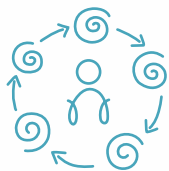
People are their own experts

One size fits one

Everyone has a role to play



# Kotahitanga: Our Collective



## Kotahitanga: Our Collective

Kotahitanga - solidarity, unity and togetherness – strengthens rangatiratanga, whanaungatanga and manaakitanga to achieve greater collective impact.



**LIFEWISE**



LinkPeople



**Visionwest**  
Waka Whakakitenga

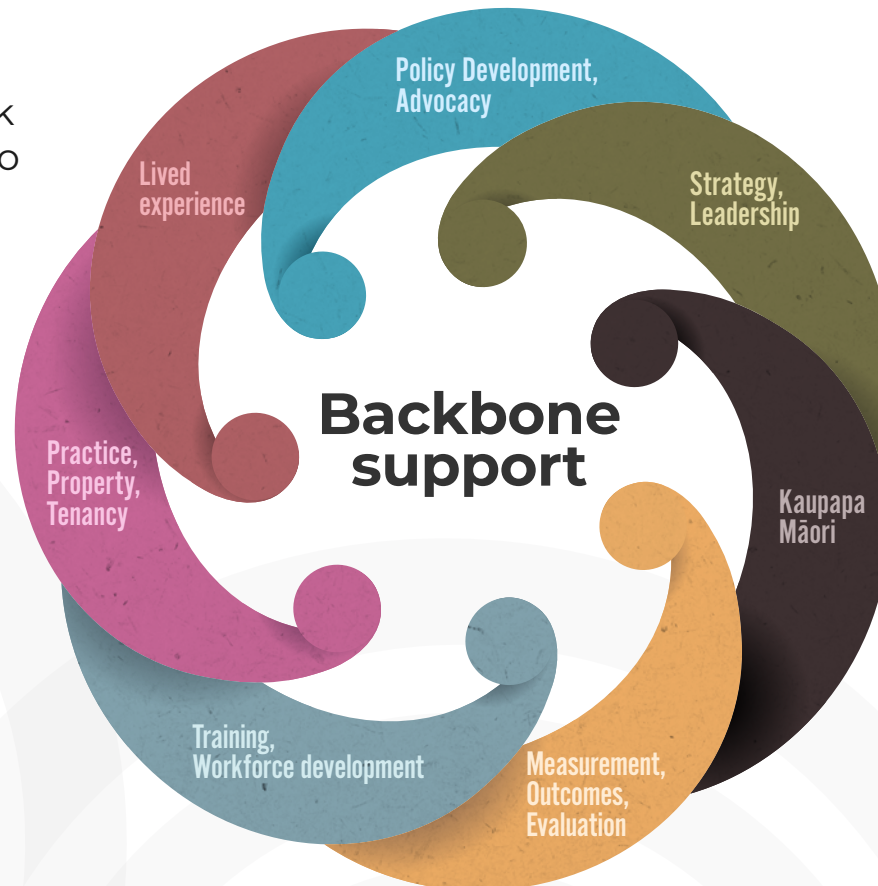
wisegroup.

Together we are stronger!



# Kotahitanga Role of the Backbone

The Backbone focuses on the following areas of work to support the Collective to achieve greater impact:





# Kotahitanga Our Collective

## Influence change

Find opportunities to partner and influence awareness, attitudes, policy, and practices to benefit the whānau we support. We courageously disrupt thinking and systems that fail people, we advocate for change and monitor our impact.



1

## Learn

- (i) Use shared measurement systems and learnings to identify and understand the issues facing the whānau we support in Tāmaki Makaurau
- (ii) Use data, evidence and learning to understand the impact of our mahi and to lead solutions that work

3

## How we achieve Collective Impact

2

## Coordinate actions

Align the learnings with the vision and priorities of the Housing First Auckland Collective and coordinate actions to achieve our shared vision and priorities





# Ā tātou whaingā rangatira

## Our shared priorities



## Ā tātou whaingā rangatira Our shared priorities

- ① Deepen our relationships with Te Ao Māori, hāpori Māori, iwi and hapū
- ① Create access to a range of decent housing options to meet the current and future needs of whānau
- ① Partner with communities, organisations and government to achieve better social, health, employment, and stable housing outcomes for whānau
- ① Build a thriving, diverse and inclusive workforce that meets the future aspirations and dreams of whānau and communities
- ① Demonstrate the value of our mahi, drive equity, and amplify the voices of lived experience
- ① Advocate for a high trust, flexible, and whānau-centred funding approach to housing that gives certainty



# Ā tātou whaingā rangatira Our shared priorities

## Deepen our relationships with Te Ao Māori, Hapori Māori, iwi and hapū

Deepening our relationships with Te Ao Māori, hapori Māori, iwi and hapū will support whānau to achieve a strong sense of kāinga, whakawhanaungatanga, and rangatiratanga on their journey to whakapuāwai

### Our collective actions

The following pou will support this priority:

#### Grow Māori leadership

Grow, develop and maintain Māori leadership, governance, and decision making across the Housing First Auckland Collective

#### Evidencing outcomes for Māori

Evidence, monitor and report outcomes for Māori through good data and measurement systems, using clear and engaging reporting across a range of channels

#### Build cultural capability

Develop, deliver and evaluate a cultural capability programme to strengthen knowledge and practice in Tāiki and mātauranga Māori

#### Build strong relationships with Māori

Partner with Māori stakeholders to optimise Māori responsiveness and increase connection to whānau, hapū, iwi and whakapapa



# Ā tātou whainganga rangatira Our shared priorities

## Create access to a range of housing options that meet the current and future needs of whānau

Creating access to a range of housing options to recognise the uniqueness of whānau and promote stability, connection and belonging

### Our collective actions

The following pou will support this priority:

#### **Amplify whānau voice**

Identify and understand what housing options whānau aspire to and monitor data and evidence to understand changing needs

#### **Advocate for housing allocation through Kāinga Ora**

Advocate for an allocation of housing supply through Kāinga Ora for whānau accessing Housing First

#### **Advocate for housing policy that delivers innovative, stable, and adequate funding**

Advocate and influence housing policy to achieve innovative, stable and adequate housing investment to increase housing supply options



# Ā tātou whaingā rangatira Our shared priorities

## Partner with communities, organisations, and government to achieve better social, health, employment, and stable housing outcomes for whānau

Share resources and expertise, and coordinate actions to achieve better outcomes for whānau and communities

### Our collective actions

The following pou will support this priority:

#### **Amplify whānau voice**

Understand the needs and aspirations of whānau, and share data and evidence to foster partnerships to achieve better outcomes for whānau and communities

#### **Improve social outcomes**

Work with organisations to help whānau grow whakawhanaungatanga and connections to whānau, hapū, iwi, and their communities to achieve better social outcomes

#### **Improve health outcomes**

Work with organisations to improve physical, mental, and spiritual health outcomes for whānau

#### **Improve employment and education outcomes**

Work with organisations to improve employment and/or education opportunities and outcomes for whānau



# Ā tātou whaingā rangatira Our shared priorities

## Build a thriving, diverse and inclusive workforce that meets the future aspirations and dreams of whānau and communities

Attract, build and maintain a strong workforce so that kaimahi can effectively journey alongside whānau and communities to support wellbeing, future aspirations and dreams

### Our collective actions

The following pou will support this priority:

#### **Deliver a workforce capability programme**

Deliver an essential skills training and development programme for kaimahi

#### **Develop workforce capability**

Contribute to major sector work to identify changing workforce needs, and grow and develop workforce capability

#### **Create a workforce pipeline**

Partner with training organisations to create and grow a workforce pipeline by promoting housing roles



# Ā tātou whaingā rangatira Our shared priorities

## Demonstrate the value of our mahi, drive equity, and amplify the voices of lived experience

Evidence whānau whakapuāwai and the value of our mahi through good measurement and evaluation that are informed by lived-experience

### Our collective actions

The following pou will support this priority:

#### Amplify whānau voice

Listen to and understand the needs and aspirations of whānau and identify barriers to whānau whakapuāwai, to drive equity and advocate for change

#### Create an impact evaluation and outcomes framework

Develop an impact evaluation and measurement framework to evidence whānau whakapuāwai and the value of our mahi

#### Evidence Collective Impact

Evidence and share the journey of whānau whakapuāwai and impact of our mahi



# Ā tātou whaingā rangatira Our shared priorities

## Advocate for a high trust, flexible, and whānau-centred funding approach to housing that gives certainty

We have a problem – the housing funding model is siloed, complex and uncertain. We also have an opportunity to solve this problem by advocating for a whānau-centred, high trust, adequate and secure funding policy that gives certainty to whānau and housing providers.

### Our collective actions

The following pou will support this priority:

#### **Propose new housing funding policy**

Work with key stakeholders to develop a flexible and stable funding model so everyone has a place to call home

#### **Advocate for new housing funding policy**

Use direct and indirect actions to influence policy makers

#### **Evaluate the effectiveness of advocacy**

Monitor and evaluate advocacy efforts and report on progress



# He kōrero whakamutunga

In closing, guided by the essence of Maiea, Taiki E! and the wairua of our tauparapara 'Kōkiri ki runga, kōkiri ki raro, kōkiri i te whānau whakapuāwai, kia whai mana ai i a rātou katoa' let us advance together, resolute in our collective mission to see all whānau flourishing beyond the shackles of homelessness.

Together as a Housing First Collective, we are resolute in our mission to also seize the boundless possibilities and collective wisdom this remarkable journey bestows upon us.

Nō reira kia kaha, kia māia, kia manawanui!

[www.housingfirst.co.nz](http://www.housingfirst.co.nz)



**HOUSING FIRST**  
— AUCKLAND —